



Annual Report

2025

Our Mission

To sustainably manage the Kings River service area's water resources, provide reliable flood protection, and produce clean energy, enhancing the region's public safety, natural resources, economic prosperity, and community well-being.

Our Vision

To be a trusted steward in resource management, fostering resilience in the Kings River region and ensuring lasting opportunities for future generations through integrity, collaboration, and public service.

Our Values

Excellence

Uphold professionalism, leadership, teamwork, safety, and continuous employee growth.

Stewardship

Develop solutions that are practical, economically viable, scientifically sound, and environmentally responsible.

Integrity

Foster honesty, respect, and sincerity in all relationships and engagements.



The year 2025 held opportunity to build upon the legacy of the Jeff L. Taylor Pine Flat Power Plant, which marked its milestone 40th anniversary of commercial operations in 2024. Kings River Conservation District advanced plans to expand generation capacity through the addition of a small hydroelectric unit on the existing turbine bypass system, with construction scheduled to begin in late 2026. At the same time, our team continues making steady progress on the relicensing process with the Federal Energy Regulatory Commission for the facility, with the goal of securing a new 50-year operating license by 2029.

From a flood operations perspective, the year saw generally normal irrigation flows throughout the Kings River system following the historic hydrologic conditions experienced in 2023. Our Flood Operations and Maintenance team remained actively engaged throughout the year, focusing on invasive species removal, debris and trash cleanup, erosion repair, and ongoing maintenance to preserve the structural integrity and reliability of the Kings River flood control system.

On the regulatory and environmental front, KRCD continues to work closely with irrigated agriculture and regional partners to navigate evolving water quality requirements and promote sustainable water resource management. The District remains committed to advocating for balanced policies that protect both agricultural productivity and environmental stewardship across the region. In addition, our team continues to be very engaged in the Fisheries Management Program below Pine Flat Dam through significant increases in rainbow trout stocking and through routine river cleanup events with public volunteers further enhancing the environment along the lower Kings River.

Looking ahead, KRCD is prioritizing the pursuit of funding and partnerships for several critical initiatives, including spillway modifications at Pine Flat Dam and additional flood control infrastructure improvements that will enhance regional resilience. Collaboration with state and federal agencies will remain essential as we address regulatory challenges while advancing opportunities to strengthen water supply reliability, flood protection, and clean energy generation.

As we reflect on the progress made and the work ahead, I want to express my sincere appreciation for the dedication of our staff, Board of Directors, and the many partners and stakeholders who support KRCD's mission. Together, we will continue to sustainably manage the Kings River service area's water resources, provide reliable flood protection, and produce clean energy, enhancing the region's public safety, natural resources, economic prosperity, and community well-being.

I encourage you to reach out to us with questions and look forward to what 2026 will bring!

A handwritten signature in white ink, appearing to read "D. Merritt".

David M. Merritt
General Manager

Board of Directors & General Manager



Standing (left to right): D. Paul Stanfield (Division 5), David Merritt (General Manager), Mark McKean (Division 4), Ceil W. Howe, Jr. (Division 6)

Seated (left to right): Jenifer Marshall (Division 7), Anthony Nonini (Division 3 - Vice President), Chris Kapheim (Division 1 - President), Masaru Yoshimoto (Division 2)

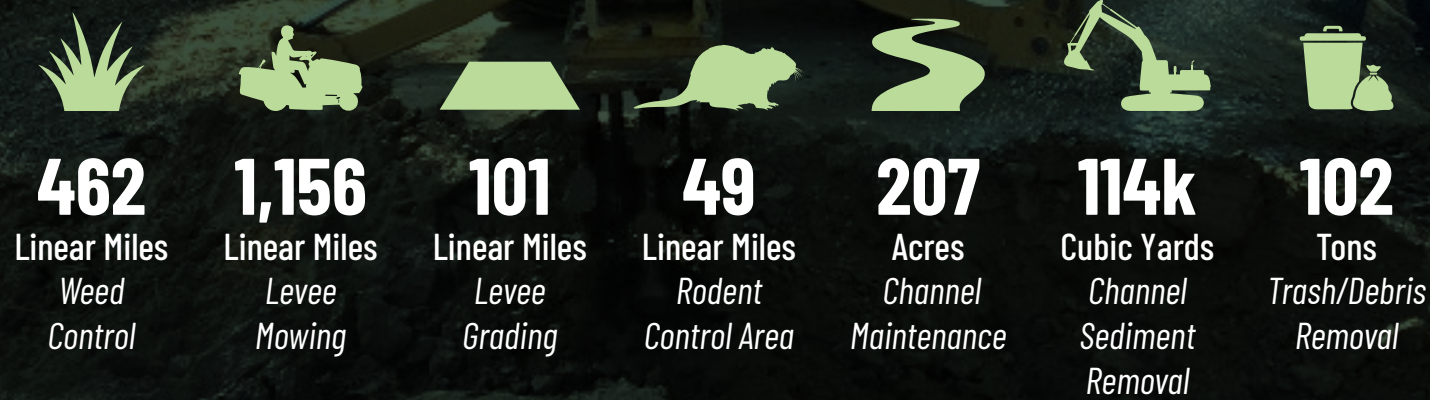
Table of Contents

About Us	2
Message from General Manager	3
Board of Directors	4
Flood Control	6
Jeff L. Taylor Pine Flat Power Plant	8
Environment	10
Water Resources	
Kings Basin Water Authority	12
Kings River Water Quality Coalition	14
Kings Water Alliance	15
External Affairs	16
Financial Report	18
Division Map	19

Flood Control

KRCD's Flood Operations and Maintenance (Flood O&M) Division manages 140 miles of levees and 70 miles of channel along the Kings River, ensuring the river and its infrastructure is well-maintained and free of sediment, debris, and invasive plant species. Additionally, the levees are continuously monitored for such issues as erosion, seepage, subsidence and general structural integrity. This work is essential for supporting water flow, preparing for future flood events, and protecting downstream communities.

Flood O&M 2025 - At A Glance



Team Safety

As of December, 31 2025, the Flood O&M team has accomplished 2,855 days without a lost time injury. The entire KRCD crew has met flood control responsibilities while working safely for nearly 8 years. Our team is dedicated to regular trainings and prioritizing safety protocols during all work.



2,855
days without a lost time injury

Prop 68: Riparian Corridor Restoration and Conservation Grant Program Completed

In partnership with the Tulare Lake Resource Conservation District, KRCD successfully completed its multi-year work under the Proposition 68 Riparian Restoration Grant Program in 2025. This comprehensive effort focused on restoring the ecological health and hydraulic function of the Kings River through invasive vegetation removal, sediment management, and debris and trash cleanup.

Invasive Plant Species Removal & Management

The primary focus of Prop 68 was the removal of invasive plant species that threaten native habitats and impede water flow. The most prevalent invasive plant species is Arundo, which is a highly aggressive, bamboo-like plant that spreads rapidly. Two other common invasive plant species found along the Kings River include tobacco plants and eucalyptus trees. Mature eucalyptus trees are often left alone because they provide a valuable habitat for hawks.

Environmental Protection and Monitoring

Environmental stewardship is a core value at KRCD. Prior to any vegetation removal or levee maintenance activities, KRCD's environmental team conducts thorough surveys to ensure that no sensitive species are present within proposed work areas.

Ongoing Maintenance

Although the Proposition 68 grant work has officially concluded, maintenance will remain ongoing. Restoration requires ongoing efforts to protect riverbank stability, improve habitat conditions, and maintain effective flood conveyance. Our Flood O&M teams work year-round to ensure these goals are met.



Jeff L. Taylor Pine Flat Power Plant

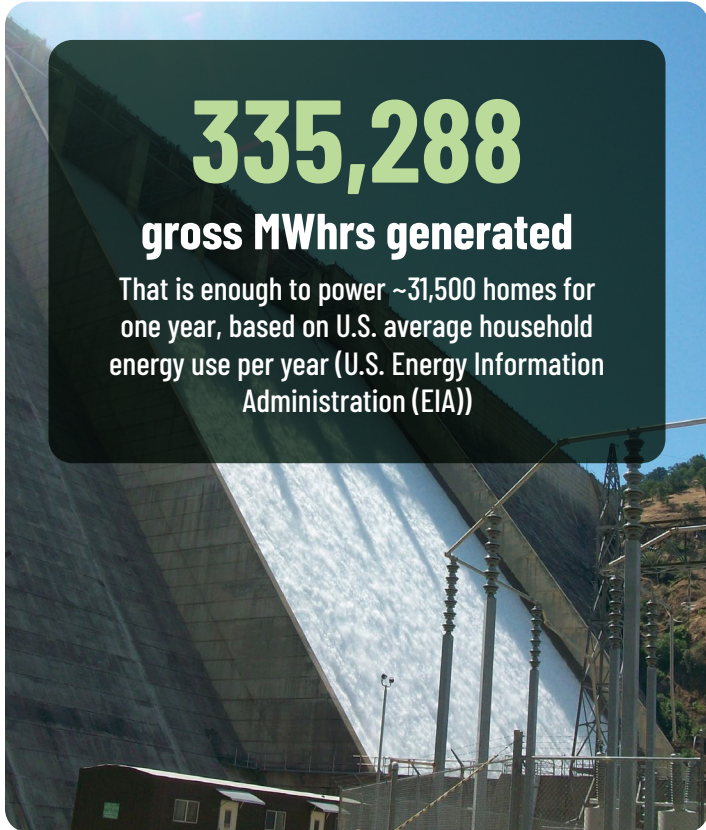
The Jeff L. Taylor Pine Flat Power Plant began commercial operation in April 1984. The carbon-free energy produced by the plant is purchased by the California Department of Water Resources to power the State Water Project's pumping facilities, which deliver water to 27 million Californians, 750,000 acres of farmland, and businesses throughout the state. The plant undergoes annual maintenance to ensure continued efficiency, safety, and reliability of power plant operations.

Power Generation

The power plant started annual operation March 31, 2025, and remained in service through September 12, 2025. The facility generated 335,288 Gross Mega Watt hours (MWhrs) with a net delivery of 331,223.1 MWhrs.

Team Safety

As of December, 31 2025, the power plant accomplished 2,897 days without a lost time injury (nearly 8 years). The facility utilizes outside consultants and other resources for training under the safety program.



335,288
gross MWhrs generated

That is enough to power ~31,500 homes for one year, based on U.S. average household energy use per year (U.S. Energy Information Administration (EIA))



2,897
days without a lost time injury

The team undergoes annual training from outside consultants and other resources to ensure the latest safety protocols and measures are followed.

Unit 4 Expansion Project Continued in 2025

The Jeff L. Taylor Pine Flat Power Plant continued to make progress in 2025 on the Unit 4 expansion project, which will further enhance sustainable hydropower generation. The new unit will operate mostly between October-February when the downstream flow demands are at lower levels, allowing for additional hydropower generation during conditions where it is not presently feasible.

Equipment supply contract and equipment design work was completed in 2025 with the turbine, generator, and associated controls and balance of plant equipment currently being manufactured and on track for Summer 2026 delivery. The powerhouse's structural foundation and layout design are also being finalized with construction expected to start September/October 2026.

The Unit 4 expansion is set for completion by early 2028, and this new small hydro unit qualifies as a renewable energy generation source within the State Water Project.

"For 30 years I have maintained equipment at the Power Plant to make sure our operators have an accurate measure of the water we are discharging into the Kings River. This is part of the hands-on work I like and have the opportunity to do here. I am able to see what I am a part of when I see river and canals with water that has passed through the plant. I strive to maintain a high level of plant readiness to supply accurate water deliveries and electrical power to the central valley areas we serve."

Tim Green
Electrical-Mechanical
Testing Technician
KRCD



Watch the Jeff L. Taylor Pine Flat Power Plant 40th Anniversary Video

Environment

The Kings River Fisheries Management Program (KRFMP) is a collaborative partnership between the Kings River Water Association, the California Department of Fish & Wildlife, and the Kings River Conservation District, working together to enhance the fisheries habitat and ecological health in the lower Kings River watershed. KRFMP supports a healthy river system that benefits both the environment and local communities.

In 2025, KRFMP continued its comprehensive approach to fisheries management through supplemental stocking of rainbow trout, the hatching and rearing of rainbow trout fry, and



ongoing surveys to monitor fish populations and habitat conditions. Monthly Kings River Cleanup events are made possible through strong partnerships with government agencies, nonprofit organizations, and dedicated volunteers.

These collective efforts provide meaningful educational opportunities, strengthen stewardship and deepen community connection to the Kings River.



The Kings River Cleanup program continues to protect and preserve the beauty and health of the Kings River. A total of 10 cleanup events were held from January through December. Thank you to all of our amazing volunteers who joined us in 2025!

Cleanup partners for 2025 included California Department of Fish and Wildlife, Fresno County, Kings River Conservancy, Kings River Water Association, and the U.S. Army Corps of Engineers.



135 volunteers **202** work hours **119** bags of trash

Seasonal Rearing & Release of Rainbow Trout Fry

61 Volunteers dedicated 174 hours to assist with daily care of trout fry, ensuring healthy growth and release into the river between Pine Flat Dam and Highway 180. The trout building successfully incubated and hatched rainbow trout eggs in two rounds between January and April.



[Watch Fry Release Video](#)

227,000
eggs incubated

Supplemental Rainbow Trout Stocking

The KRFMP and KRCD supported the trout population through supplemental stocking in two rounds. The first round occurred between January and May and the second between November and December.

30,670
rainbow trout stocked by KRFMP

34,500
rainbow trout stocked by KRCD

Fall Fish Population Survey

KRFMP conducted the annual fall fish population survey to assess the fish population and overall health of the river. Staff, volunteers, and partners contributed ~674 hours to support this effort. An estimated 4,155 fish were surveyed across five survey sites over five days. Through ongoing efforts like fish stocking, fry rearing, and monitoring, KRFMP continues to sustain and enhance the fishery habitat of the Kings River. Total number of fish captured in the 2025 survey:



4,155
fish surveyed



The Kings Basin Water Authority (KBWA), administered by KRCD, is a collaborative group of nearly 60 public, private, and nongovernmental agencies working together to manage water resources in the Kings Groundwater Subbasin. In 2025, KBWA member Fresno Metropolitan Flood Control District (FMFCD) completed a multiple public benefit water infrastructure project and KBWA participated in the Integrated Regional Water Management (IRWM) Roundtable of Regions, an all-volunteer, statewide forum comprised of representatives from California's 48 IRWM regions.

Fresno Metropolitan Flood Control District (FMFCD): Basin "CF" Stormwater Recharge and Flood Protection Project Completion

Construction of the FMFCD Basin "CF" Stormwater Recharge and Flood Protection Project was completed in January 2025, a major milestone for flood protection and groundwater sustainability in south Fresno. The project, funded by the Department of Water Resources Proposition 1 Round 1 Integrated Regional Water Management Implementation Program, provides dual benefits by reducing flood risk during major storm events and increasing groundwater recharge to support long-term water supplies. Developed in partnership

with Malaga County Water District, the completed basin and supporting infrastructure allows stormwater to be safely conveyed during critical storms and directed into the basin for recharge when conditions allow. FMFCD began placing recharge water into Basin "CF" in late April 2025. Once fully operational, the basin is expected to recharge approximately 1,400 acre-feet of groundwater annually while also enhancing the local wildlife habitat.



INTEGRATED APPROACH TO WATER MANAGEMENT SOLUTIONS



IRWM Roundtable of Regions

The Roundtable of Regions is a statewide, all-volunteer forum representing California's 48 Integrated Regional Water Management (IRWM) regions. With more than 130 members, the Roundtable serves approximately 87 percent of the state's geographic area and 99 percent of its population. Since 2004, it has supported collaboration among IRWM practitioners through information sharing, coordination with state and federal partners, and structured feedback to the California Department of Water Resources (DWR)

to strengthen IRWM program implementation statewide. The Kings Basin Water Authority actively participates in the Roundtable of Regions, collaborating with IRWM partners across California to share best practices, address common challenges, and provide coordinated input to DWR. This engagement fosters regional coordination and supports the continued evolution of the IRWM program to meet changing needs statewide.



Established by growers as a non-profit joint powers agency, the Kings River Water Quality Coalition (KRWQC) provides comprehensive monitoring, reporting, regulatory assistance, and outreach services to ensure growers remain compliant and informed of the latest requirements of the Central Valley Regional Water Quality Control Board while promoting responsible water quality management practices. In 2025, the KRWQC represented 3,400 members and approximately 685,105 irrigated acres of land.



Outreach and Collaboration With Members

In 2025, the Coalition continued its collaboration with University of California Cooperative Extension Farm Advisors and other technical experts to provide educational workshops and outreach meetings. These efforts delivered practical guidance to growers on regulatory compliance, nutrient management practices, and water quality protection strategies.



The Kings Water Alliance (KWA) is a non-profit community benefit organization administered by KRCD. KWA tests for nitrate contamination in residential drinking water wells across parts of Fresno, Kings, and Tulare counties, ensuring safe and reliable drinking water for rural communities through free well water testing and free water delivery to households in need. In 2025, KWA expanded services to parts of Kings County, while continuing to service areas of Fresno and Tulare Counties.



Community Engagement

KWA participated in over 65 community events, furthering awareness of well contamination issues and available resources for safe drinking water. KWA partnered with local nonprofit organizations as well as local schools and universities throughout the year to promote and share important information with residents in the KWA service area.

The Coalition remains dedicated to strengthening partnerships, improving data-driven decision making, and supporting growers in protecting both surface water and groundwater resources throughout the Kings River region.

Watch Grower Spotlight Video



Watch Customer Testimonial Videos



External Affairs

KRCD's External Affairs Department supports the District's responsibilities across its 1.2-million-acre service area and the regulatory programs it administers. The department leads strategic communications, public outreach, interagency coordination, and state and federal legislative advocacy, while also identifying and securing grant funding opportunities. Working collaboratively with staff across all KRCD program areas, External Affairs partners closely with local agencies, community organizations, and regional stakeholders to advance the District's mission and ensure strong representation at every level.



Provided ongoing outreach to rural residential well users across KWA's 1.5-million-acre service area in coordination with government and nonprofit partners. KWA secured a \$300,000 Central Valley Community Foundation grant to develop three inventories that will help rural communities manage critical water supplies, strengthen local economies, and build a skilled water workforce. The project is scheduled for completion in August 2026.



Supported outreach to the coalition's 3,400 agricultural land-owning members within a 685,105 irrigated-acre area, who join together for cost-effective compliance with the State's Irrigated Lands Regulatory Program. Board member and grower spotlight video production, collateral design, and print and email distribution of the quarterly newsletter were among services provided to KRWQC by the external affairs team in 2025.



Coordinated with the KRFMP Technical Steering Committee to develop a new logo and brand for the Kings River Cleanup program. Consistent growth of email contacts via online forms, outreach events, and social media helped maintain public awareness and fueled volunteer recruitment for river cleanups, trout incubator building support, and the annual fish population surveys.

Legislative & Funding Advocacy

In 2025, External Affairs advanced KRCD's priorities by engaging in state & federal legislative advocacy focused on flood control, water storage, water quality, hydropower, and ecosystem health. The team reviewed proposed legislation, coordinated with elected officials representing the District, and worked alongside partners including the Association of California Water Agencies and Valley Ag Water Coalition. The team pursued strategic funding opportunities to strengthen regional water supply resilience, hydropower reliability, and natural resources. Key priorities included: Airborne Snow Observation (ASO), Levee System Improvements, Pine Flat Hydropower Unit 4, and Kings River Fisheries Projects.

Raising Pine Flat Dam to Strengthen Our Regions Water Future

In 2025, KRCD continued its advocacy for a feasibility study of a 12-foot raise of Pine Flat Dam. Owned and operated by the U.S. Army Corps of Engineers, Pine Flat Dam would gain approximately 120,700 acre-feet of additional storage capacity through the proposed dam raise. This added capacity would enhance flood protection for downstream communities, improve drought resilience for agriculture and local communities, support groundwater recharge under SGMA, and strengthen carbon-free hydropower reliability.

In flood years, such as 2023, a raised dam could potentially store an additional 100k+ acre-feet of floodwater, instead of that water flowing into the Tulare Lake basin. KRCD's External Affairs team participated in site visits and congressional tours of Pine Flat Dam alongside the U.S. Army Corps of Engineers.



"Raising Pine Flat Dam represents an opportunity to build upon an existing federal asset to protect communities, strengthen the regional economy, and support future generations in the Kings River service area."

- David Merritt, General Manager, KRCD

[Read Irrigation Leader Article](#)



Congressman Vince Fong and U.S. Army Colonel Robert McTighe tour Pine Flat Dam to help build awareness and momentum for the dam raise feasibility study.

Financial Statements

2024/2025 Fiscal Year

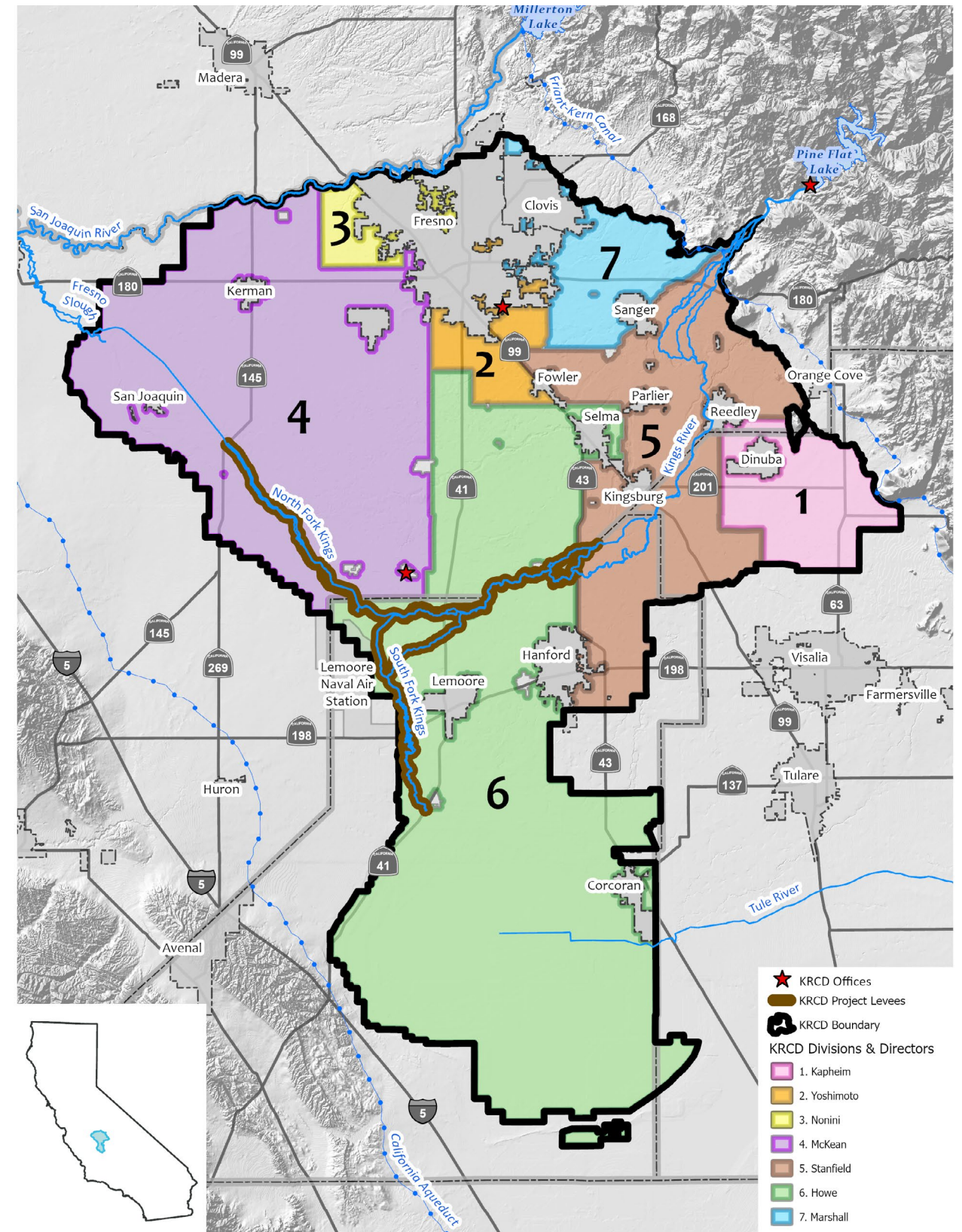
Sources of funds

Fiscal Agents and Charge of Services	\$3,901,999
Grants	\$827,407
Property Tax	\$1,784,307
Investment Earning	\$1,654,304
Miscellaneous	\$3,019,840
Power Benefit	\$1,554,817
Pine Flat O&M	\$10,259,785
Total	\$23,002,459

Uses of funds

Pine Flat O&M	\$10,327,684
River Maintenance	\$994,189
General and Administrative	\$6,728,382
Capital Improvement	\$125,427
Total	\$18,175,682

KRCD Division Map





KRC D

Kings River Conservation District

Reliable resources for the Valley

**4886 East Jensen Ave.
Fresno, California 93725**

**(559) 237-5567
krcd.org**