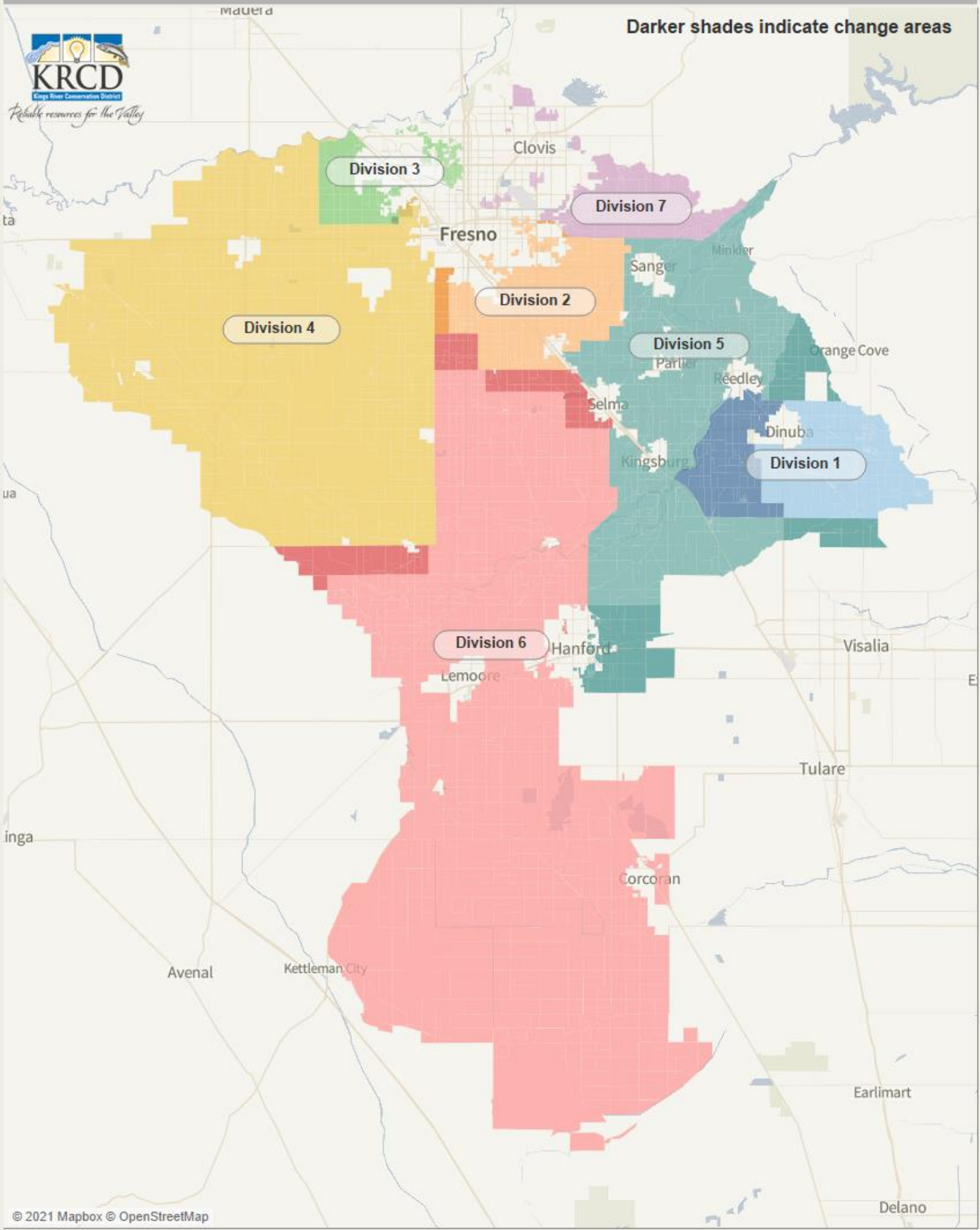


Scenario 1 - 4.9% Overall Deviation



Reliable resources for the Valley

Darker shades indicate change areas

Scenario 1

District	Ideal Population	Total Population	Deviation	Hispanic or Latino (any race)	White	Asian	Two or more races	Black or African American	American Indian or Alaskan Native	Other race	Native Hawaiian or Pacific Islander
1	23514	23857	-1.46%	19972	2649	869	220	36	82	25	4
2	23514	23473	0.17%	14265	5091	2951	510	417	116	110	13
3	23514	23460	0.23%	7893	12159	1730	867	532	143	116	20
4	23514	23434	0.34%	16120	5170	1187	404	340	114	91	8
5	23514	23278	1.00%	14509	7056	706	495	316	96	82	18
6	23514	22968	2.32%	12584	7701	873	547	323	136	786	18
7	23514	24127	-2.61%	10418	9223	3025	791	391	119	140	20
Totals		164597	4.93%	95761	49049	11341	3834	2355	806	1350	101

District	Ideal Population	Total Population	Deviation	Hispanic or Latino (any race)	White	Asian	Two or more races	Black or African American	American Indian or Alaskan Native	Other race	Native Hawaiian or Pacific Islander
1	23514	23857	-1.46%	83.72%	11.10%	3.64%	0.92%	0.15%	0.34%	0.10%	0.02%
2	23514	23473	0.17%	60.77%	21.69%	12.57%	2.17%	1.78%	0.49%	0.47%	0.06%
3	23514	23460	0.23%	33.64%	51.83%	7.37%	3.70%	2.27%	0.61%	0.49%	0.09%
4	23514	23434	0.34%	68.79%	22.06%	5.07%	1.72%	1.45%	0.49%	0.39%	0.03%
5	23514	23278	1.00%	62.33%	30.31%	3.03%	2.13%	1.36%	0.41%	0.35%	0.08%
6	23514	22968	2.32%	54.79%	33.53%	3.80%	2.38%	1.41%	0.59%	3.42%	0.08%
7	23514	24127	-2.61%	43.18%	38.23%	12.54%	3.28%	1.62%	0.49%	0.58%	0.08%
Totals		164597	4.93%	58.18%	29.80%	6.89%	2.33%	1.43%	0.49%	0.82%	0.06%

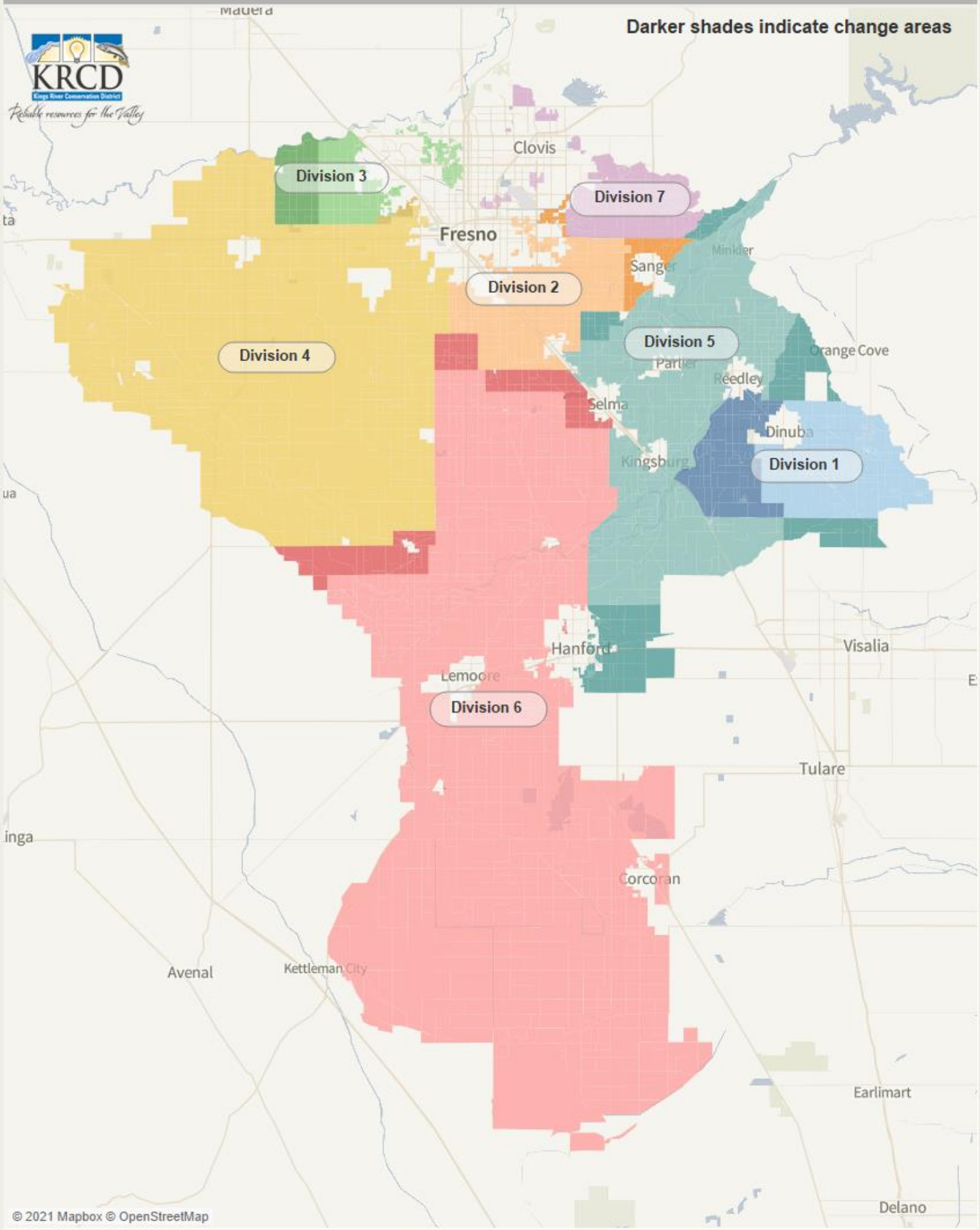
District	AWP_CVAP_Total	AWP_CVAP_pop_hisprace_Hisp_tot	AWP_CVAP_pop_hisprace_notHisp_w_hite	AWP_CVAP_pop_hisprace_notHisp_black	AWP_CVAP_pop_hisprace_notHisp_american	AWP_CVAP_pop_hisprace_notHisp_asian	AWP_CVAP_pop_hisprace_notHisp_hpi	AWP_CVAP_pop_hisprace_notHisp_to_m
1	12248	8127	2669	806	257	98	254	6
2	16048	7714	5362	2205	176	301	82	30
3	18684	4425	11524	1510	356	702	52	17
4	13084	6591	5015	774	262	470	65	17
5	16147	7775	6760	781	474	229	95	19
6	13036	4637	6704	807	174	358	332	4
7	17264	5882	8687	1856	240	478	113	5
Totals	106511	45151	46721	8739	1939	2636	993	98

District	AWP_CVAP_Total	AWP_CVAP_pop_hisprace_Hisp_tot	AWP_CVAP_pop_hisprace_notHisp_w_hite	AWP_CVAP_pop_hisprace_notHisp_black	AWP_CVAP_pop_hisprace_notHisp_american	AWP_CVAP_pop_hisprace_notHisp_asian	AWP_CVAP_pop_hisprace_notHisp_hpi	AWP_CVAP_pop_hisprace_notHisp_to_m
1	12248	66.35%	21.79%	6.58%	2.10%	0.80%	2.07%	0.05%
2	16048	48.07%	33.41%	13.74%	1.10%	1.88%	0.51%	0.19%
3	18684	23.68%	61.68%	8.08%	1.91%	3.76%	0.28%	0.09%
4	13084	50.37%	38.33%	5.92%	2.00%	3.59%	0.50%	0.13%
5	16147	48.15%	41.87%	4.84%	2.94%	1.42%	0.59%	0.12%
6	13036	35.57%	51.43%	6.19%	1.33%	2.75%	2.55%	0.03%
7	17264	34.07%	50.32%	10.75%	1.39%	2.77%	0.65%	0.03%
Totals	106511	42.39%	43.86%	8.20%	1.82%	2.47%	0.93%	0.09%

Scenario 2 - 2.7% Overall Deviation



Darker shades indicate change areas



Scenario 2

District	Ideal Population	Total Population	Deviation	Hispanic or Latino (any race)	White	Asian	Two or more races	Black or African American	American Indian or Alaskan Native	Other race	Native Hawaiian or Pacific Islander
1	23514	23857	-1.46%	19972	2649	869	220	36	82	25	4
2	23514	23751	-1.01%	14241	5329	3008	524	407	117	110	15
3	23514	23565	-0.22%	7911	12376	1621	856	528	140	114	19
4	23514	23214	1.28%	15924	4936	1361	415	358	115	95	10
5	23514	23255	1.10%	14480	7047	711	507	313	98	82	17
6	23514	23511	0.01%	13026	7804	868	546	324	139	786	18
7	23514	23444	0.30%	10207	8908	2903	766	389	115	138	18
Totals		164597	2.73%	95761	49049	11341	3834	2355	806	1350	101

District	Ideal Population	Total Population	Deviation	Hispanic or Latino (any race)	White	Asian	Two or more races	Black or African American	American Indian or Alaskan Native	Other race	Native Hawaiian or Pacific Islander
1	23514	23857	-1.46%	83.72%	11.10%	3.64%	0.92%	0.15%	0.34%	0.10%	0.02%
2	23514	23751	-1.01%	59.96%	22.44%	12.66%	2.21%	1.71%	0.49%	0.46%	0.06%
3	23514	23565	-0.22%	33.57%	52.52%	6.88%	3.63%	2.24%	0.59%	0.48%	0.08%
4	23514	23214	1.28%	68.60%	21.26%	5.86%	1.79%	1.54%	0.50%	0.41%	0.04%
5	23514	23255	1.10%	62.27%	30.30%	3.06%	2.18%	1.35%	0.42%	0.35%	0.07%
6	23514	23511	0.01%	55.40%	33.19%	3.69%	2.32%	1.38%	0.59%	3.34%	0.08%
7	23514	23444	0.30%	43.54%	38.00%	12.38%	3.27%	1.66%	0.49%	0.59%	0.08%
Totals		164597	2.73%	58.18%	29.80%	6.89%	2.33%	1.43%	0.49%	0.82%	0.06%

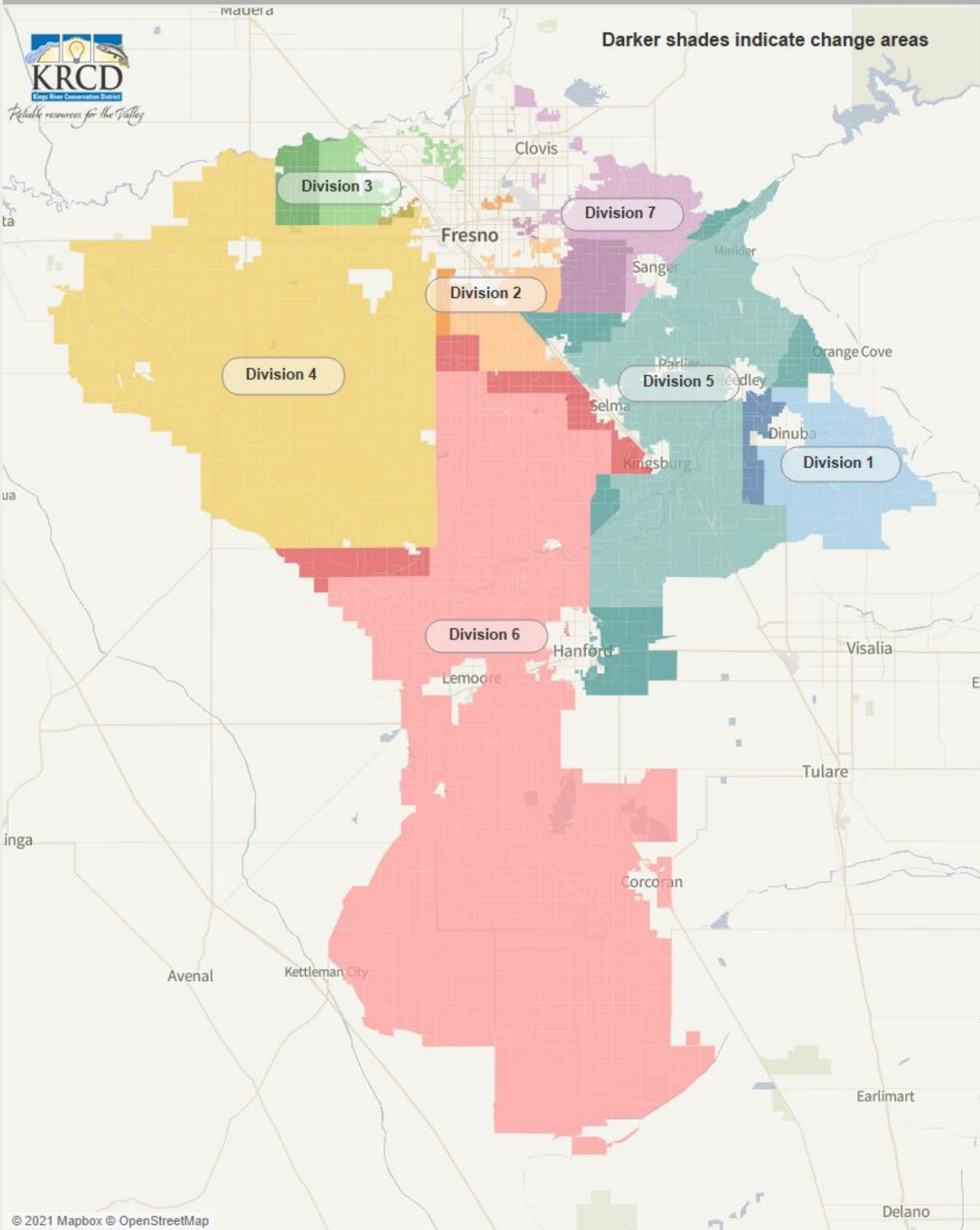
District	CVAP_pop_hisrace_total	CVAP_pop_hisrace_Hisp_tot	CVAP_pop_hisrace_notHisp_white	CVAP_pop_hisrace_notHisp_asian	CVAP_pop_hisrace_notHisp_tom	CVAP_pop_hisrace_notHisp_black	CVAP_pop_hisrace_notHisp_aman	CVAP_pop_hisrace_notHisp_nhpi
1	12248	8127	2669	806	256	98	254	5
2	16501	7899	5633	2199	183	279	97	30
3	18582	4249	11664	1465	342	694	50	17
4	13293	6780	4904	847	276	515	67	17
5	15960	7613	6745	810	474	232	98	20
6	13229	4735	6783	807	172	359	332	4
7	16698	5748	8323	1805	236	459	95	5
Totals	106511	45151	46721	8739	1939	2636	993	98

District	AWP_CVAP_Total	AWP_CVAP_pop_hisrace_Hisp_tot	AWP_CVAP_pop_hisrace_notHisp_w_hite	AWP_CVAP_pop_hisrace_notHisp_bl_ack	AWP_CVAP_pop_hisrace_notHisp_a_mian	AWP_CVAP_pop_hisrace_notHisp_a_sian	AWP_CVAP_pop_hisrace_notHisp_n_hpi	AWP_CVAP_pop_hisrace_notHisp_to_m
1	12248	66.35%	21.79%	6.58%	2.09%	0.80%	2.07%	0.04%
2	16501	47.87%	34.14%	13.33%	1.11%	1.69%	0.59%	0.18%
3	18582	22.87%	62.77%	7.88%	1.84%	3.73%	0.27%	0.09%
4	13293	51.00%	36.89%	6.37%	2.08%	3.87%	0.50%	0.13%
5	15960	47.70%	42.26%	5.08%	2.97%	1.45%	0.61%	0.13%
6	13229	35.79%	51.27%	6.10%	1.30%	2.71%	2.51%	0.03%
7	16698	34.42%	49.84%	10.81%	1.41%	2.75%	0.57%	0.03%
Totals	106511	42.39%	43.86%	8.20%	1.82%	2.47%	0.93%	0.09%

Scenario 3 - 1.1% Overall Deviation



Darker shades indicate change areas



Scenario 3

District	Ideal Population	Total Population	Deviation	Hispanic or Latino (any race)	White	Asian	Two or more races	Black or African American	American Indian or Alaskan Native	Other race	Native Hawaiian or Pacific Islander
1	23514	23569	-0.23%	20222	2141	847	205	49	29	75	1
2	23514	23596	-0.35%	15084	4737	2508	505	515	115	120	12
3	23514	23565	-0.22%	7911	12376	1621	856	528	114	140	19
4	23514	23329	0.79%	16102	4953	1296	415	344	93	117	9
5	23514	23501	0.05%	14164	7540	778	516	295	78	110	20
6	23514	23525	-0.05%	12940	7847	908	558	328	789	137	18
7	23514	23512	0.01%	9338	9455	3383	779	296	132	107	22
Totals		164597	1.14%	95761	49049	11341	3834	2355	1350	806	101

District	Ideal Population	Total Population	Deviation	Hispanic or Latino (any race)	White	Asian	Two or more races	Black or African American	American Indian or Alaskan Native	Other race	Native Hawaiian or Pacific Islander
1	23514	23569	-0.23%	85.80%	9.08%	3.59%	0.87%	0.21%	0.12%	0.32%	0.00%
2	23514	23596	-0.35%	63.93%	20.08%	10.63%	2.14%	2.18%	0.49%	0.51%	0.05%
3	23514	23565	-0.22%	33.57%	52.52%	6.88%	3.63%	2.24%	0.48%	0.59%	0.08%
4	23514	23329	0.79%	69.02%	21.23%	5.56%	1.78%	1.47%	0.40%	0.50%	0.04%
5	23514	23501	0.05%	60.27%	32.08%	3.31%	2.20%	1.26%	0.33%	0.47%	0.09%
6	23514	23525	-0.05%	55.01%	33.36%	3.86%	2.37%	1.39%	3.35%	0.58%	0.08%
7	23514	23512	0.01%	39.72%	40.21%	14.39%	3.31%	1.26%	0.56%	0.46%	0.09%
Totals		164597	1.14%	58.18%	29.80%	6.89%	2.33%	1.43%	0.82%	0.49%	0.06%

District	CVAP_pop_hisrace_total	CVAP_pop_hisrace_Hisp_tot	CVAP_pop_hisrace_notHisp_white	CVAP_pop_hisrace_notHisp_asian	CVAP_pop_hisrace_notHisp_tom	CVAP_pop_hisrace_notHisp_black	CVAP_pop_hisrace_notHisp_aman	CVAP_pop_hisrace_notHisp_nhpi
1	12870	8468	2647	830	139	328	306	21
2	15342	8133	4840	1382	574	214	78	30
3	18582	4249	11664	1465	694	342	50	17
4	13186	6767	4875	819	478	276	67	17
5	15442	7344	6800	769	192	379	42	6
6	13487	4834	6892	872	358	195	336	4
7	17602	5356	9003	2602	201	205	114	3
Totals	106511	45151	46721	8739	2636	1939	993	98

District	AWP_CVAP_Total	AWP_CVAP_pop_hisrace_Hisp_tot	AWP_CVAP_pop_hisrace_notHisp_w_hite	AWP_CVAP_pop_hisrace_notHisp_bl_ack	AWP_CVAP_pop_hisrace_notHisp_a_mian	AWP_CVAP_pop_hisrace_notHisp_a_sian	AWP_CVAP_pop_hisrace_notHisp_n_hpi	AWP_CVAP_pop_hisrace_notHisp_to_m
1	12870	65.80%	20.57%	6.45%	1.08%	2.55%	2.38%	0.16%
2	15342	53.01%	31.55%	9.01%	3.74%	1.39%	0.51%	0.20%
3	18582	22.87%	62.77%	7.88%	3.73%	1.84%	0.27%	0.09%
4	13186	51.32%	36.97%	6.21%	3.63%	2.09%	0.51%	0.13%
5	15442	47.56%	44.04%	4.98%	1.24%	2.45%	0.27%	0.04%
6	13487	35.84%	51.10%	6.47%	2.65%	1.45%	2.49%	0.03%
7	17602	30.43%	51.15%	14.78%	1.14%	1.16%	0.65%	0.02%
Totals	106511	42.39%	43.86%	8.20%	2.47%	1.82%	0.93%	0.09%