

ABBREVIATIONS

AB	AGGREGATE BASE	HORIZ	HORIZONTAL
AC	ASPHALT CONCRETE	HP	HINGE POINT, HIGH POINT, HORSEPOWER
ACP	ASBESTOS-CEMENT PIPE	HP GAS	HIGH PRESSURE GAS
AD	ALUMINUM DISK	HPS	HIGH PRESSURE SWITCH
AGG	AGGREGATE	HR	HANDRAIL
AH	AHEAD	H/T	HUB & TACK
ALT	ALTERNATE	HWL	HIGH WATER LEVEL
AP	ANGLE POINT	HYDRO	HYDRO-PNEUMATIC
APPROX	APPROXIMATE	ID	INSIDE DIAMETER
APN	ASSESSOR'S PARCEL NUMBER	IN	INCH
ARV	AIR RELIEF VALVE	INV	INVERT
ASTM	AMERICAN SOCIETY FOR TESTING AND MATERIALS	IP	IRON PIPE
AV	AIR VENT	IRR	IRRIGATION
AWE	AVENUE	JP	JUNCTION POLE
AWWA	AMERICAN WATER WORKS ASSOCIATION	LBS	POUNDS
BAR	BARRIER	LC	LENGTH OF CURVE
BC	BEGIN CURVE	LOW	LONG CRESTED WEIR
BD	BRASS DISK	LF	LINEAR FEET
BFP	BACKFLOW PREVENTER	LG	LONG
BK	BACK	LT	LEFT
BLDG	BUILDING	LPG	LIQUEFIED PETROLEUM GAS
BM	BENCHMARK	MAX	MAXIMUM
BO	BOLLARD	MB	MAILBOX
BTM	BOTTOM	MCC	MOTOR CONTROL CENTER
BVC	BEGIN VERTICAL CURVATURE	MFR	MANUFACTURER
BW	BACK OF WALK	MH	MANHOLE
BWL	BACK OF WALL	MIN	MINIMUM
BWR	BARB WIRE	MISC	MISCELLANEOUS
C, CONC	CONCRETE	MJ	MECHANICAL JOINT
CA	CALIFORNIA	MN	MAG NAIL
CAB	CABINET	MP	MEDIUM PRESSURE GAS LINE
CBL	CABLE	MPT	MALE PIPE THREAD
CFS	CUBIC FEET PER SECOND	MRKR	MARKER
C&G	CURB & GUTTER	MS	MILD STEEL
CHK	CHECK	(N)	NORTH
CHLK	CHAIN LINK	NAVJ	NORTH AMERICAN VERTICAL DATUM
CI	CAST IRON	NC	NORMALLY CONSOLIDATED
CIP	CAST IRON PIPE	NGVD	NATIONAL GEODETIC VERTICAL DATUM
CIPCP	CAST-IN-PLACE CONCRETE PIPE	NIC	NOT IN CONTRACT
CL	CLASS	NPT	NATIONAL PIPE THREAD
CLVT	CULVERT	NTS	NOT TO SCALE
CL	CENTERLINE	OC	ON CENTER
CLF	CHAIN LINK FENCE	OD	OUTSIDE DIAMETER
CLR	CLEAR, CLEARANCE	OH	OVERHEAD
CMLC	CEMENT MORTAR LINED & COATED	OP	OPERATING
CMP	CORRUGATED METAL PIPE	OSHA	OCCUPATIONAL SAFETY & HEALTH ADMINISTRATION
CN	CONCRETE NAIL	O&M	OPERATIONS & MAINTENANCE
CNS	COMPACTED NATIVE SOIL	(P)	PROPOSED
CO	SEWER CLEAN OUT	PB	PULL BOX
CONT	CONTINUOUS	PC	POINT OF CURVATURE
CONST	CONSTRUCT/CONSTRUCTION	PCC	POINT OF COMPOUND CURVATURE
COR	CORNER	PCC	PORTLAND CEMENT CONCRETE
CORP	CORPORATION	PE	PERMANENT EASEMENT
COL	COLUMN	PER	PERIMETER
COUP	COUPLING	PI	POINT OF INTERSECTION
CP	CONTROL POINT	PIP	PLASTIC IRRIGATION PIPE
CR	CROWN	PLC	PROGRAMMABLE LOGIC CONTROLLER
CU	CUBIC	R	PROPERTY LINE
CY	CUBIC YARDS	PNL	PANEL
DA	DRIVE APPROACH	POC	POINT ON CURVE
DEC	DECIDUOUS	POL	POINT ON LINE
DEMO	DEMOLISH/DEMOLITION	POT	POINT ON TANGENT
DI	DROP INLET	PP	POWER POLE
DIA, Ø	DIAMETER	PRC	POINT OF REVERSE CURVATURE
DIM	DIMENSION	PRV	PRESSURE REDUCING VALVE
DIP	DUCTILE IRON PIPE	PSF	POUNDS PER SQUARE FOOT
D/S	DOWNSTREAM	PSI	POUNDS PER SQUARE INCH
DW	DRIVEWAY	PT	POINT OF TANGENCY
DWG	DRAWING	PVC	POLYVINYL CHLORIDE
(E)	EXISTING, EAST	PVCC	POINT OF VERTICAL COMPOUND CURVATURE
EA	EACH	PVMT	PAVEMENT
EC	END CURVE	PVRC	POINT OF VERTICAL REVERSE CURVATURE
ECC	ECCENTRIC	PV	POINT OF VERTICAL INTERSECTION
EF	EACH FACE	R	RADIUS
EG	EXISTING GRADE	RBR	REBAR
EL ELEV	ELEVATION	RC	RADIUS OF CURVE
ELC	EPOXY LINED & COATED	RCP	REINFORCED CONCRETE PIPE
ELEC	ELECTRIC	RD	RELATIVE DENSITY
ELL	ELBOW	RD	ROAD
EM	ELECTRIC METER	RE	REFERENCE
EOL	END OF LINE	REQD	REQUIRED
EP	EDGE OF PAVEMENT	RET	RETURN
EQUIV	EQUIVALENT	REV	REVISION
ESMT	EASEMENT	RORCP	RUBBER GASKETED REINFORCED CONCRETE PIPE
EUC	EUCALYPTUS	RGS	RIGID GALVANIZED STEEL
EVC	END VERTICAL CURVE	RP	RADIUS POINT
EW	EACH WAY	RR	RAILROAD
EXP	EXPOSED	RT	RIGHT
(F)	FUTURE	RTU	REMOTE TERMINAL UNIT
F&I	FURNISH & INSTALL	R/W	RIGHT OF WAY
FD	FOUND	(S)	SOUTH, SOLVENT WELD
FDC	FIRE DEPARTMENT CONNECTION	S	SLIP
FF	FINISHED FLOOR	S	SLOPE
FG	FINISHED GRADE	SCH	SCHEDULE
FH	FIRE HYDRANT	SCP	STANDARD CONCRETE PIPE
F, FL	FLOW LINE	SD	STORM DRAIN
FLG	FLANGE	SDMH	STORM DRAIN MANHOLE
FLGD	FLANGED	SEC	SECTION
FM	FORCE MAIN	SERV	SERVICE
FNC	FENCE	SF	SQUARE FEET
FRP	FIBER REINFORCED POLYESTER PIPE	SF	SERVICE POLE
FT	FOOT/FEET	SPEC	SPECIFICATION
FW	FRONT OF WALK	SPNDL	SPINDLE
GA	FACE OF WALL	SQ	SQUARE
GAL	GALLON	SS	SANITARY SEWER
GALV	GALVANIZED	SS OR STS	STAINLESS STEEL
GB	GRADE BREAK	SSMH	SANITARY SEWER MANHOLE
GM	GAS METER	STA	STATION
GPM	GALLONS PER MINUTE	STD	STANDARD
GRVL	GRAVEL	STL	STEEL
GS	GAS	STP	STAND PIPE
GSV	GAS VALVE	STRC	STRUCTURE
GUY	GUY WIRE	STRP	STRIPING
GV	GATE VALVE	SWL	SWALE
HD	HEAD	STWL	STILLING WELL
HDPE	HIGH DENSITY POLYETHYLENE	(T)	THREADED
HDR	HEADER	T	THREAD
HDW	HEADWALL	T&B	TOP & BOTTOM
HGL	HYDRAULIC GRADE LINE	TB	TOP OF BANK
		TBM	TEMPORARY BENCHMARK

LINETYPES

EXISTING	NEW	DESCRIPTION
		WATER LEVEL
		BARRICADE
		CONTOUR (DEPRESSION)
		CONTOUR (MAJOR)
		CONTOUR (MINOR)
		EMBANKMENT TOE
		EMBANKMENT TOP
		FENCE (BLOCK WALL)
		FENCE (CHAIN LINK)
		FENCE (WOOD)
		FENCE (WIRE)
		FENCE (SILT)
		FIBER ROLL
		GRADE BREAK
		GUARDRAIL
		RAILROAD
		RETAINING WALL
		SWALE CENTERLINE
		SWALE W/FLOW ARROWS
		WATER (LAKE/POND)
		WATER (MARSH/SWAMP)
		COMPUTER/COMM. (BURIED)
		ELECTRIC (AERIAL)
		ELECTRIC (BURIED)
		FIBER-OPTIC
		GAS
		IRRIGATION
		OIL
		SANITARY SEWER
		SANITARY SEWER FORCE MAIN
		SANITARY SEWER LATERAL
		SIGNAL INTERCONNECT (BURIED)
		STEAM
		STORM DRAINAGE
		TELEPHONE (AERIAL)
		TELEPHONE (BURIED)
		TELEVISION (AERIAL LINE)
		TELEVISION (BURIED LINE)
		WATER
		CENTERLINE
		EASEMENT
		MEANDER LINE
		PROPERTY LINE
		RESERVATION/PARK/FOREST
		RIGHT-OF-WAY
		RELINQUISH ACCESS LINE
		SECTION LINE
		STATE/COUNTY/CORPORATE LIMIT
		REVISION CLOUD
		SAWCUT LINE
		DEMO LINE

SYMBOLS

EXISTING	NEW	DESCRIPTION
		ELECTRIC METER
		PAD MOUNTED TRANSFORMER
		ELECTRIC VAULT
		UTILITY POLE
		UTILITY POLE ANCHOR
		ELECTRIC MANHOLE
		GAS METER
		GAS VALVE
		SANITARY SEWER CLEAN OUT
		SANITARY SEWER MANHOLE
		SSMH (ECCENTRIC CONE)
		STORM DRAIN CATCH BASIN
		STORM DRAIN INLET
		STORM DRAIN CULVERT
		STORM DRAIN MANHOLE
		MAIL BOX
		SIGN
		YARD LIGHT
		GUARD POST
		CONTROL POINT
		BENCH MARK
		IRON PIPE
		MONUMENT
		MONUMENT (OPTIONAL)
		OWNERSHIP TIE
		LOT NUMBER
		TELEPHONE RISER
		TELEPHONE VAULT
		2-NOZZLE HYDRANT
		3-NOZZLE HYDRANT
		FIRE DEPT. CONNECTION
		FIRE VAULT
		WATER METER
		WELL
		WATER VALVE
		BLOW-OFF
		AIR RELIEF VALVE
		BACK FLOW PREVENTOR
		GATE VALVE HANDLE
		STILLING WELL
		FENCE POST
		FENCE GATE
		REVISION
		CONSTRUCTION CALLOUT
		DETAIL CALLOUT
		LINE BREAK
		PIPE END (SCHEMATIC)
		PIPE END
		EMBANKMENT ARROW
		HIGH WATER LINE
		SPOT ELEVATION
		SECTION VIEW

BID SET
02/15/2021

LEGEND AND ABBREVIATIONS

PINE FLAT POWER PLANT ROAD
RESURFACING
KINGS RIVER CONSERVATION DISTRICT
FRESNO COUNTY, CA
GENERAL

EST. 1968
PROVOST & PRITCHARD
CONSULTING GROUP
411 Empire Center Company
288 WEST CRAWFORD AVENUE
FRESNO, CALIFORNIA 93711-6162
559/449-2700 FAX 559/449-2715
www.ppg.com

DESIGN ENGINEER:
JASON STAICER
LICENSE NO:
86615

DRAFTED BY: JMN
CHECKED BY: JSD

DATE: DEC 2020
JOB NO: 136420002
PROJECT NO: 136420002

PHASE:

0 1'
ONE INCH ADJUST SCALE FOR REDUCED OR ENLARGED PLANS.

ORIGINAL SCALE SHOWN IS ONE INCH ADJUST SCALE FOR REDUCED OR ENLARGED PLANS.

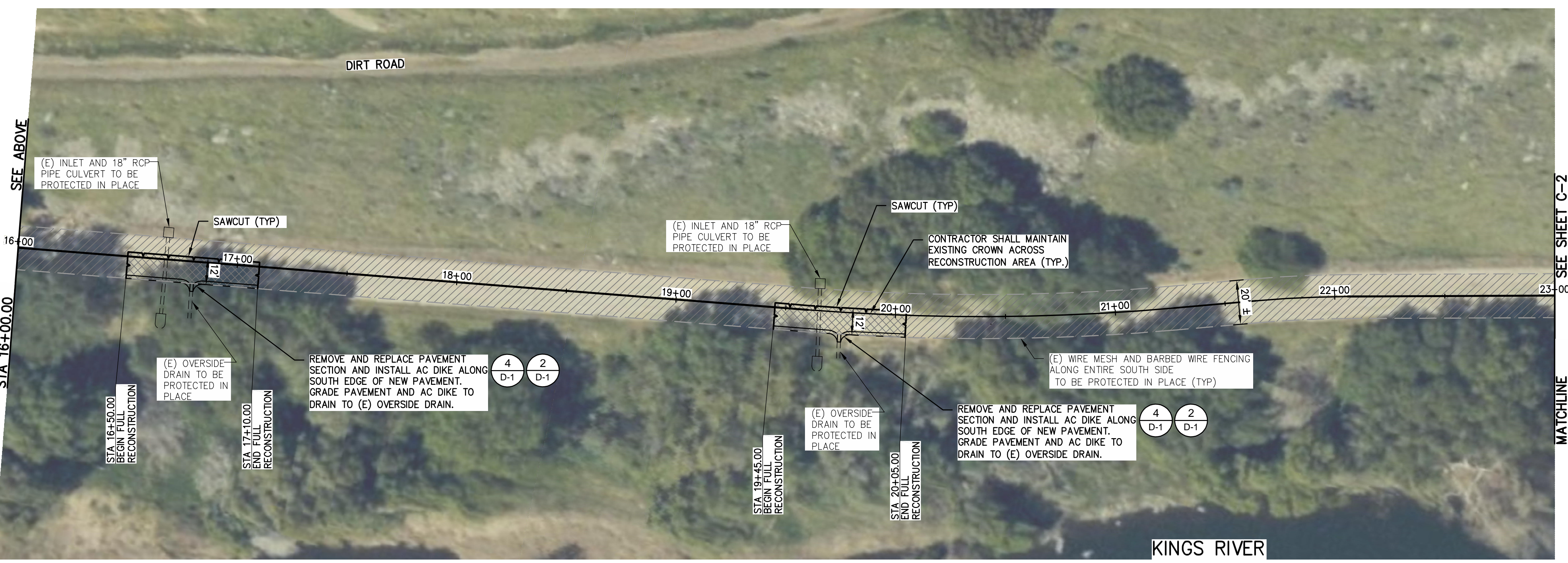
SHEET **G-2**

2 OF 7

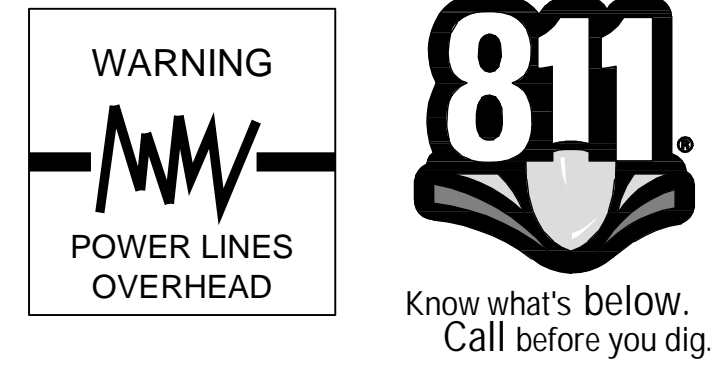
2/22/2021 8:47 AM \\ppg.com\pdat01\clients\Kings River Conservation\Dist-1364\136420002-Pine Flat Power Plant Rd\300 CAD\340 Sheet Sets\01_General\G-2 LEGEND AND ABBREVIATIONS.dwg - Jason Staicer



PINE FLAT POWER PLANT ACCESS ROAD
STATIONING ALONG ROAD C



PINE FLAT POWER PLANT ACCESS ROAD
STATIONING ALONG ROAD C



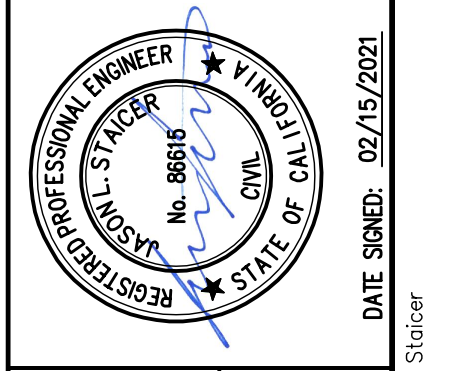
- NOTES**
- INLETS, PIPE CULVERTS, AND OVERSIDE DRAIN LOCATIONS SHOWN ARE APPROXIMATE. CONTRACTOR SHALL FIELD VERIFY ALL LOCATIONS AND PROTECT ALL IN PLACE.
 - STATIONING IS NOT TIED TO ANY CONTROL POINTS OR MONUMENTS. PURPOSE OF STATIONING IS TO IDENTIFY THE APPROXIMATE RELATIVE LOCATION OF THE IMPROVEMENTS.

LEGEND

	ASPHALT CONCRETE OVERLAY	1 D-1
	FULL DEPTH PAVEMENT RECONSTRUCTION	2 D-1
	0.15" MILL AND OVERLAY	
	WEDGE GRIND	5 D-1

COPYRIGHT 2020 BY PROVOST & PRITCHARD CONSULTING GROUP, INC. ALL RIGHTS RESERVED. THIS DOCUMENT IS THE PROPERTY OF PROVOST & PRITCHARD CONSULTING GROUP, INC. AND IS NOT TO BE REPRODUCED, COPIED, OR CITED IN ANY FORM OR MANNER WITHOUT THE WRITTEN PERMISSION AND CONSENT OF PROVOST & PRITCHARD CONSULTING GROUP, INC. THE USER OF THIS DOCUMENT SHALL BE RESPONSIBLE FOR OBTAINING ALL NECESSARY PERMITS AND APPROVALS FROM THE APPROPRIATE AGENCIES AND AGENCIES. PROVOST & PRITCHARD CONSULTING GROUP, INC. IS NOT RESPONSIBLE FOR ANY ERRORS OR OMISSIONS IN THIS DOCUMENT.

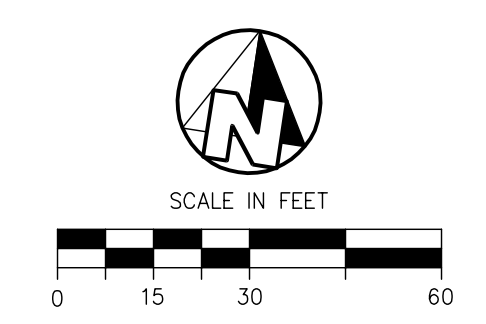
BID SET	02/15/2021
NO.	
REVISION	
BY	
DATE	

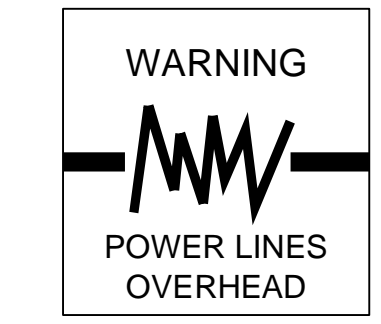


PINE FLAT POWER PLANT ROAD
RESURFACING
KINGS RIVER CONSERVATION DISTRICT
FRESNO COUNTY, CA
CIVIL
STREET PLAN

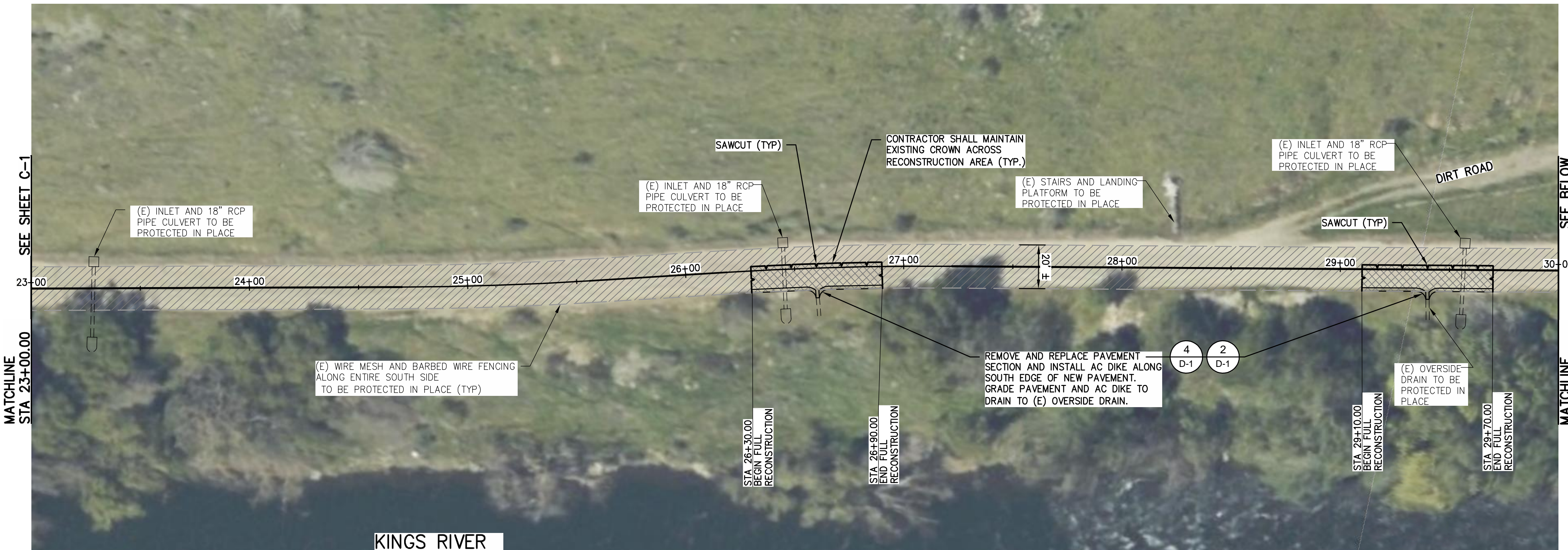
EST. 1968
PROVOST & PRITCHARD
CONSULTING GROUP
An Engineering and Construction Company
417 286 WEST CRAWFORD AVENUE
FRESNO, CALIFORNIA 93711-6162
559/449-2700 FAX 559/449-2715
www.ppcg.com

DESIGN ENGINEER:	JASON STAICER
LICENSE NO.:	86615
DRAFTED BY:	JMN
CHECKED BY:	JSD
DATE:	DEC 2020
JOB NO.:	136420002
PROJECT NO.:	136420002
PHASE:	
ORIGINAL SCALE SHOWN IS ONE INCH. ADJUST SCALE FOR REDUCED OR ENLARGED PLANS.	
SHEET	C-1

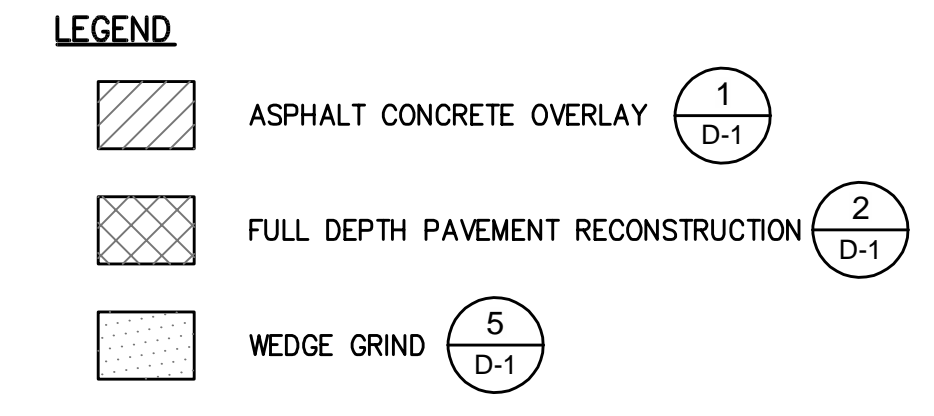




COPYRIGHT 2020 BY PROVOST & PRITCHARD CONSULTING GROUP, INC. ALL RIGHTS RESERVED. THIS DOCUMENT IS THE PROPERTY OF PROVOST & PRITCHARD CONSULTING GROUP, INC. AND IS TO BE USED ONLY FOR THE PROJECT AND SITE SPECIFICALLY IDENTIFIED HEREIN. ANY REPRODUCTION, DISTRIBUTION, OR USE OF THIS DOCUMENT FOR ANY OTHER PROJECT WITHOUT THE WRITTEN PERMISSION AND CONSENT OF PROVOST & PRITCHARD CONSULTING GROUP, INC. IS STRICTLY PROHIBITED. THE USER OF THIS DOCUMENT SHALL BE RESPONSIBLE FOR OBTAINING ALL NECESSARY PERMITS AND APPROVALS FROM THE APPROPRIATE AGENCIES AND AGENCIES. PROVOST & PRITCHARD CONSULTING GROUP, INC. IS NOT RESPONSIBLE FOR ANY DAMAGE TO PERSONS OR PROPERTY ARISING FROM THE USE OF THIS DOCUMENT.



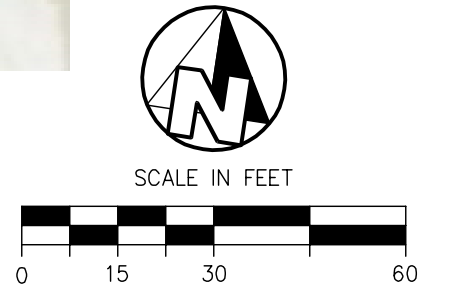
- NOTES**
- INLETS, PIPE CULVERTS, AND OVERSIDE DRAIN LOCATIONS SHOWN ARE APPROXIMATE. CONTRACTOR SHALL FIELD VERIFY ALL LOCATIONS AND PROTECT ALL IN PLACE.
 - STATIONING IS NOT TIED TO ANY CONTROL POINTS OR MONUMENTS. PURPOSE OF STATIONING IS TO IDENTIFY THE APPROXIMATE RELATIVE LOCATION OF THE IMPROVEMENTS



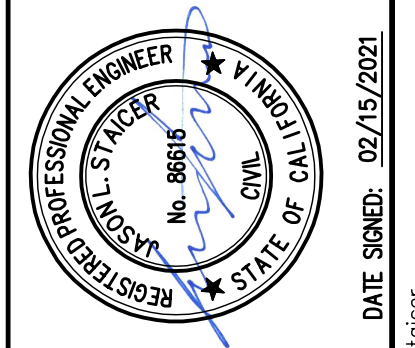
PINE FLAT POWER PLANT ACCESS ROAD
STATIONING ALONG ROAD CL



PINE FLAT POWER PLANT ACCESS ROAD
STATIONING ALONG ROAD CL



NO.	REVISION	BY	DATE
	BID SET		02/15/2021

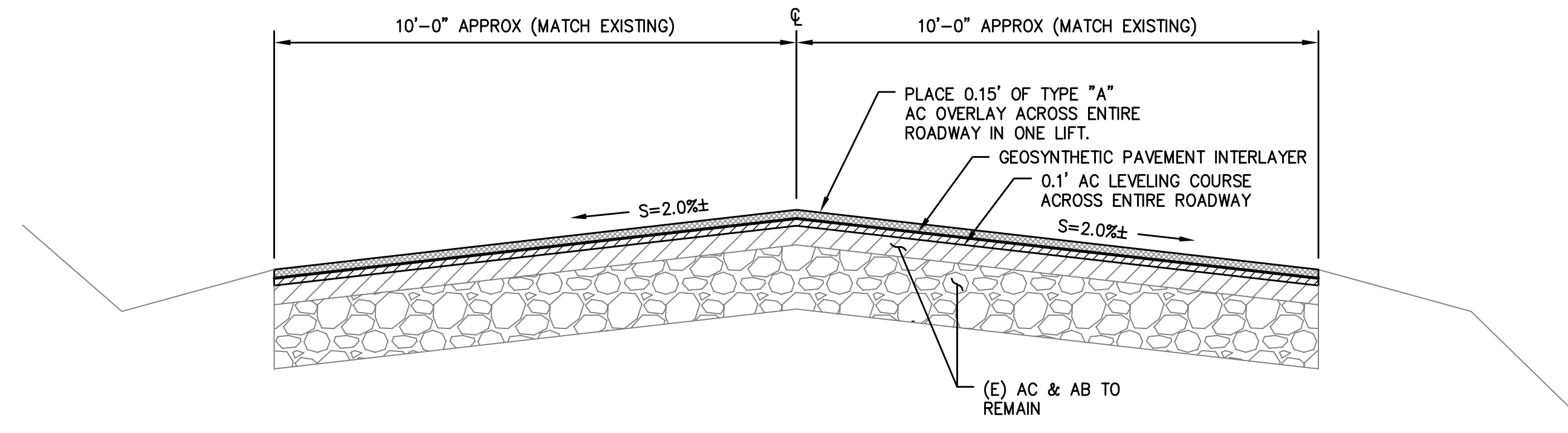


PINE FLAT POWER PLANT ROAD
RESURFACING
KINGS RIVER CONSERVATION DISTRICT
FRESNO COUNTY, CA
CIVIL
STREET PLAN

EST. 1968
PROVOST & PRITCHARD
CONSULTING GROUP
AN EMPLOYEE OWNED COMPANY
417 EMPLOYEES
288 WEST CRAWFELL AVENUE
FRESNO, CALIFORNIA 93711-6162
558/449-2700 FAX 558/449-2715
www.pwpg.com

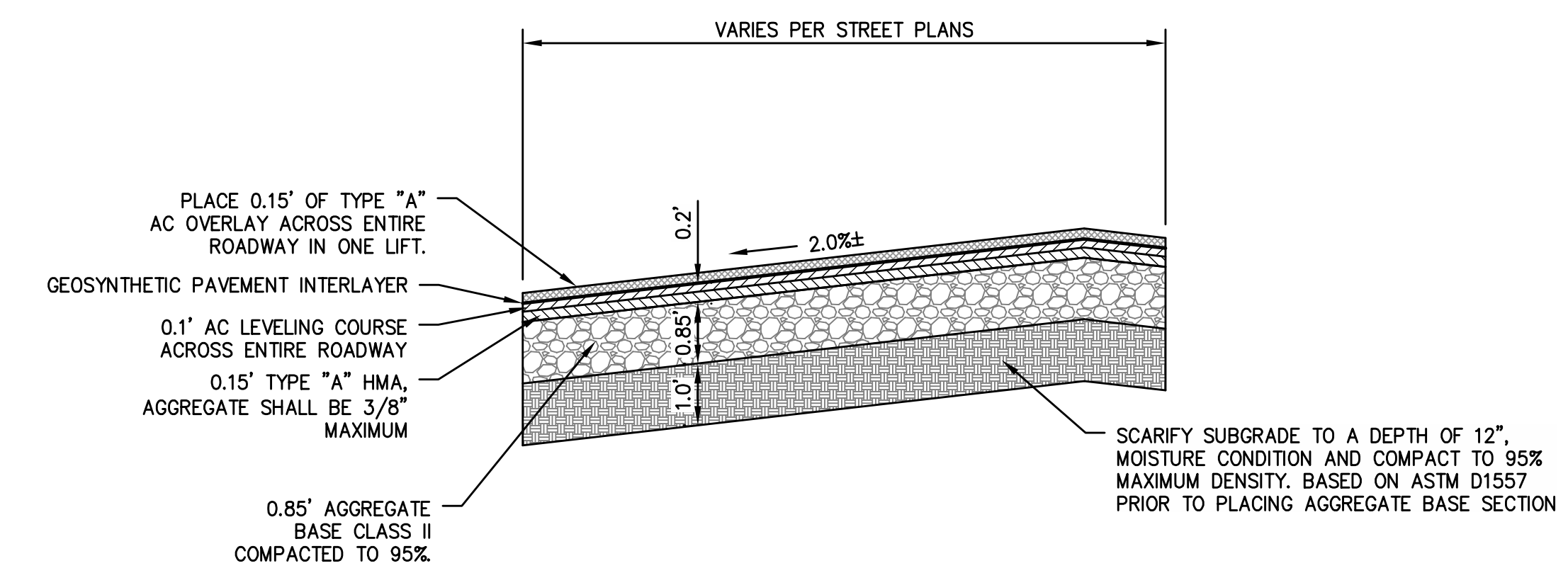
DESIGN ENGINEER:
JASON STAICER
LICENSE NO:
86615
DRAFTED BY:
JMN
CHECKED BY:
JSD
DATE: DEC 2020
JOB NO: 136420002
PROJECT NO: 136420002

PHASE:
0 1"
ONE INCH. ADJUST SCALE FOR
REDUCED OR ENLARGED PLANS.
SHEET
C-2
4 OF 7



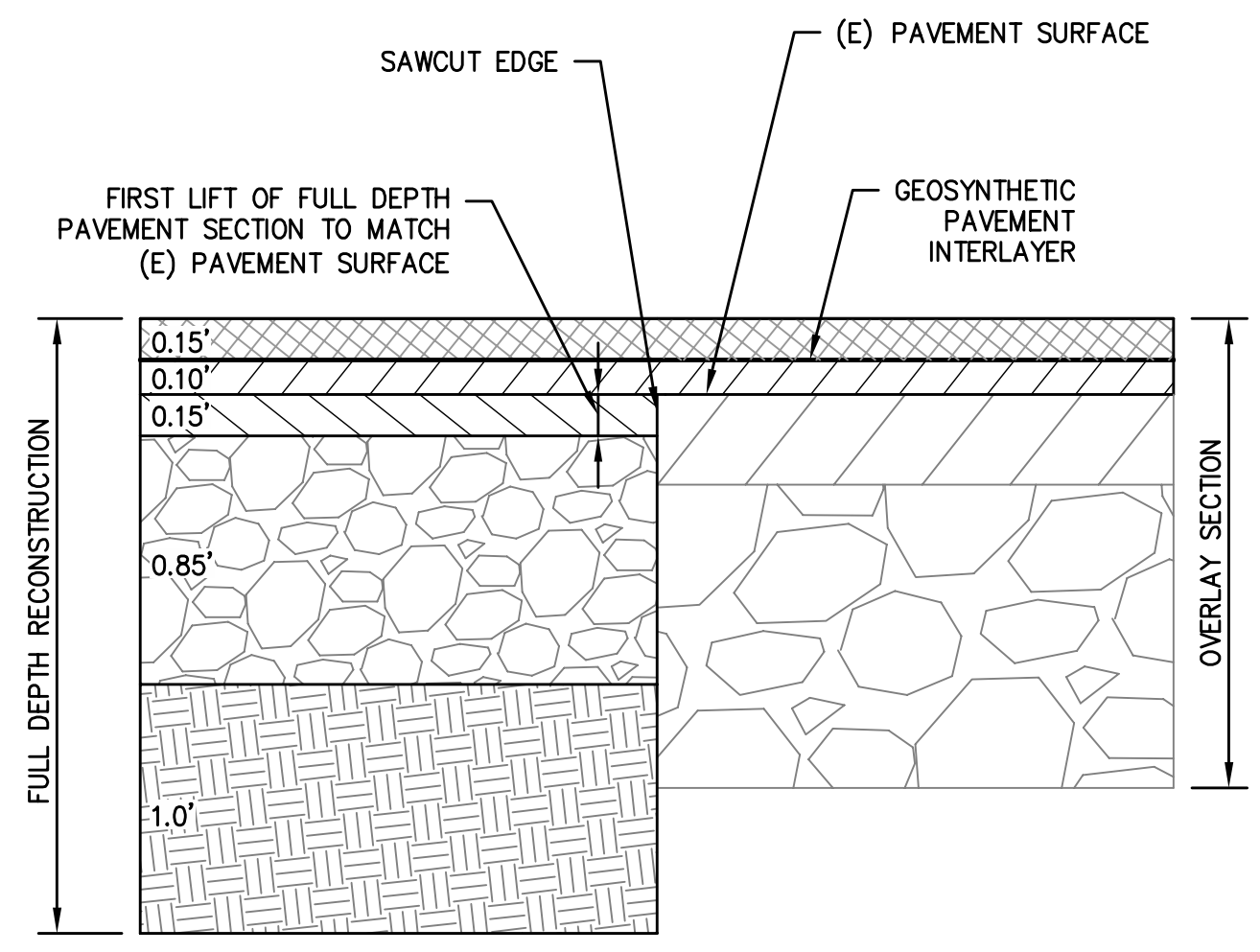
1
D-1

0.15' OVERLAY



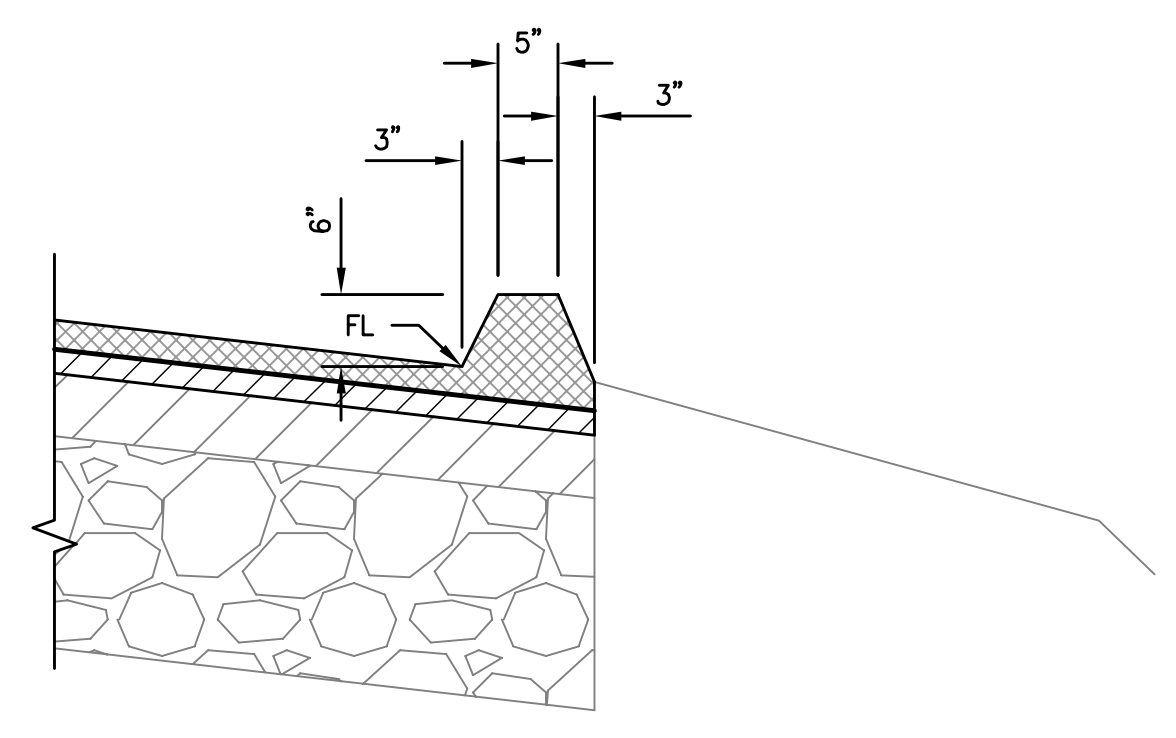
2
D-1

FULL DEPTH RECONSTRUCTION



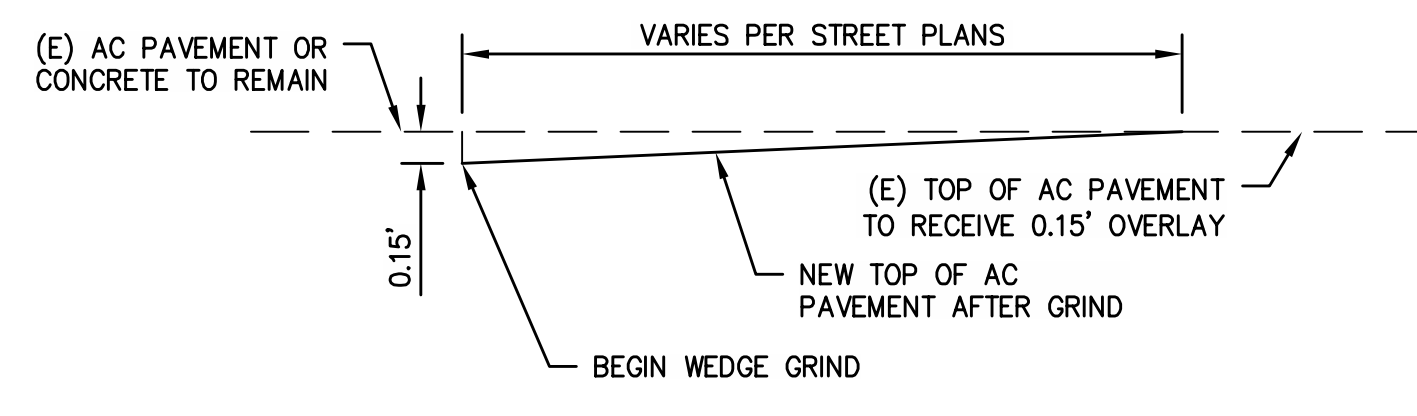
3
D-1

PAVEMENT DETAIL AT SAWCUT EDGE



4
D-1

AC DIKE



5
D-1

WEDGE GRIND

COPYRIGHT 2020 BY PROVOST & PRITCHARD CONSULTING GROUP, INC. ALL RIGHTS RESERVED. THIS DOCUMENT IS THE PROPERTY OF PROVOST & PRITCHARD CONSULTING GROUP, INC. AND IS TO BE USED ONLY FOR THE PROJECT AND SITE SPECIFICALLY IDENTIFIED HEREIN. ANY REPRODUCTION OR TRANSMISSION OF THIS DOCUMENT IN ANY FORM OR MANNER WITHOUT THE WRITTEN PERMISSION AND CONSENT OF PROVOST & PRITCHARD CONSULTING GROUP, INC. IS STRICTLY PROHIBITED. THE THIRD PARTY SHALL HOLD THE FIRM OF PROVOST & PRITCHARD CONSULTING GROUP, INC. HARMLESS FROM AND AGAINST ALL CLAIMS, DAMAGES, LOSSES AND EXPENSES, INCLUDING REASONABLE ATTORNEY'S FEES, ARISING FROM OR RESULTING FROM THE USE OF THIS DOCUMENT.

BID SET
02/15/2021

NO. BY DATE

REVISION

DATE SIGNED: 02/15/2021

PINE FLAT POWER PLANT ROAD
RESURFACING
KINGS RIVER CONSERVATION DISTRICT
FRESNO COUNTY, CA
DETAILS

PROVOST & PRITCHARD
CONSULTING GROUP
AN EMPLOYEE OWNED COMPANY
411 EMPLOYER AVENUE
288 WEST CRAWFORD AVENUE
FRESNO, CALIFORNIA 93711-6162
558/449-2700 FAX 558/449-2715
www.pandp.com

DESIGN ENGINEER:
JASON STAICER
LICENSE NO:
86615

DRAFTED BY: JMN CHECKED BY: JSD

DATE: DEC 2020

JOB NO: 136420002

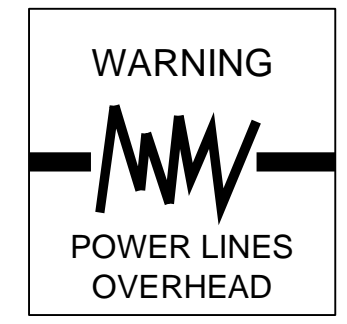
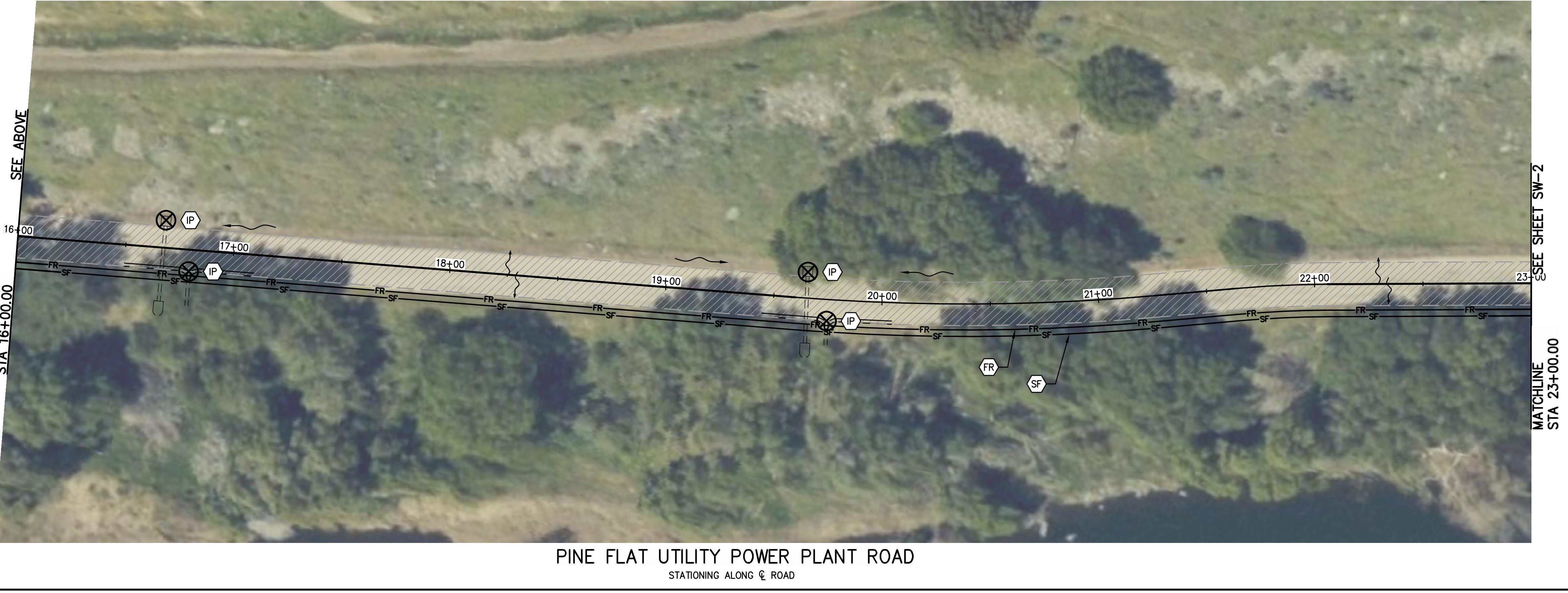
PROJECT NO: 136420002

PHASE:

0 1"
ONE INCH ADJUST SCALE FOR REDUCED OR ENLARGED PLANS.

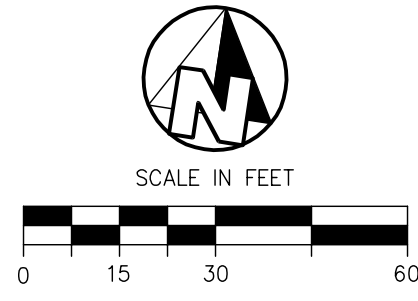
SHEET D-1

5 OF 7



- NOTE**
- REFER TO APPROVED CONSTRUCTION DOCUMENTS FOR COMPLETE IMPROVEMENT PLANS AND SPECIFICATIONS.
 - DO NOT BLOCK DRIVEWAYS OR ENTRANCE LOCATIONS WITH ANY BMP ITEMS.
 - CONTRACTOR SHALL PROVIDE INLET PROTECTION AT INLETS DOWNSTREAM OF PROJECT SITE, REGARDLESS OF SPECIFIC INCLUSION ON THESE DRAWINGS.

- LEGEND**
- PROJECT AREA
 - DRAINAGE DIRECTION
 - BMP: STORM DRAIN INLET PROTECTION PER CASQA BMP HANDBOOK
 - BMP: FIBER ROLLS PER CASQA BMP HANDBOOK
 - BMP: SILT FENCE PER CASQA BMP HANDBOOK



COPYRIGHT 2020 BY PROVOST & PRITCHARD CONSULTING GROUP, INC. ALL RIGHTS RESERVED. THIS DRAWING IS THE PROPERTY OF PROVOST & PRITCHARD CONSULTING GROUP, INC. AND IS NOT TO BE REPRODUCED, COPIED, OR CROPPED IN ANY FORM OR MANNER WITHOUT THE WRITTEN PERMISSION AND CONSENT OF PROVOST & PRITCHARD CONSULTING GROUP, INC. THE USER OF THIS DRAWING SHALL BE RESPONSIBLE FOR OBTAINING ALL NECESSARY PERMITS AND RIGHTS OF WAY. PROVOST & PRITCHARD CONSULTING GROUP, INC. IS NOT RESPONSIBLE FOR ANY ERRORS OR OMISSIONS.

BID SET
02/15/2021

PROFESSIONAL ENGINEER
JASON STAICER
No. 86615
RES. CIVIL
STATE OF CALIF.

DATE SIGNED: 02/15/2021

PINE FLAT POWER PLANT ROAD
 RESURFACING
 KINGS RIVER CONSERVATION DISTRICT
 FRESNO COUNTY, CA
 STORMWATER MANAGEMENT

PROVOST & PRITCHARD
 CONSULTING GROUP
 AN EMPLOYEE OWNED COMPANY
 417 E. BROADWAY
 FRESNO, CALIFORNIA 93711-6162
 559/449-2700 FAX 559/449-2715
 www.ppcg.com

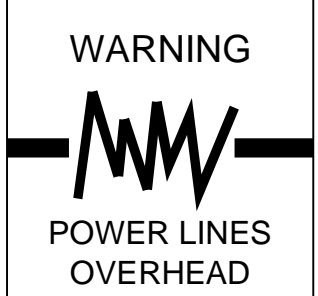
DESIGN ENGINEER:
 JASON STAICER
 LICENSE NO:
 86615

DRAFTED BY: JMN CHECKED BY: JSD
 DATE: DEC 2020
 JOB NO: 136420002
 PROJECT NO: 136420002

PHASE:
 0" = 1"
 ORIGINAL SCALE SHOWN IS
 ONE INCH. ADJUST SCALE FOR
 REDUCED OR ENLARGED PLANS.

SHEET **SW-1**
 6 OF 7

2/22/2021 8:52 AM \\ppcg.com\pstudio\clients\Kings River Conservation\Dist-1364\136420002-Pine Flat Power Plant Rd\300 CAD\340 Sheet Sets\04_Sheet Sets\04_Storm Water Management\SW-1 Storm Water Management.dwg - Jason Staicer



COPYRIGHT 2020 BY PROVOST & PRITCHARD CONSULTING GROUP, INC. ALL RIGHTS RESERVED. THIS DOCUMENT IS THE PROPERTY OF PROVOST & PRITCHARD CONSULTING GROUP, INC. EXPRESSLY RESERVES ITS COMMON LAW COPYRIGHT AND ALL OTHER RIGHTS IN THIS DOCUMENT. NO PART OF THIS DOCUMENT IS TO BE REPRODUCED, COPIED, OR CAPPED IN ANY FORM OR MANNER WHATSOEVER, NOR ARE THEY TO BE TRANSMITTED IN ANY MANNER WITHOUT THE WRITTEN PERMISSION AND CONSENT OF PROVOST & PRITCHARD CONSULTING GROUP, INC. IN THE EVENT OF A DISPUTE, THE THIRD PARTY SHALL HOLD THE FIRM OF PROVOST & PRITCHARD CONSULTING GROUP, INC. HARMLESS AND SHALL BEAR THE COST OF DEFENSE AND ATTORNEY'S FEES ASSOCIATED WITH DEFENDING AND ENFORCING THESE RIGHTS.

- NOTE**
- REFER TO APPROVED CONSTRUCTION DOCUMENTS FOR COMPLETE IMPROVEMENT PLANS AND SPECIFICATIONS.
 - DO NOT BLOCK DRIVEWAYS OR ENTRANCE LOCATIONS WITH ANY BMP ITEMS.
 - CONTRACTOR SHALL PROVIDE INLET PROTECTION AT INLETS DOWNSTREAM OF PROJECT SITE, REGARDLESS OF SPECIFIC INCLUSION ON THESE DRAWINGS.

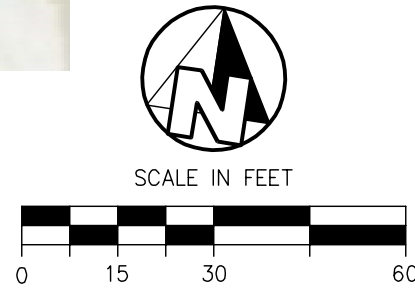
- LEGEND**
- PROJECT AREA
 - DRAINAGE DIRECTION
 - BMP: STORM DRAIN INLET PROTECTION PER CASQA BMP HANDBOOK
 - BMP: FIBER ROLLS PER CASQA BMP HANDBOOK
 - BMP: SILT FENCE PER CASQA BMP HANDBOOK



PINE FLAT UTILITY POWER PLANT ROAD
STATIONING ALONG CL ROAD



PINE FLAT UTILITY POWER PLANT ROAD
STATIONING ALONG CL ROAD



BID SET		NO.	BY	DATE
02/15/2021				
		REVISION		

PINE FLAT POWER PLANT ROAD
RESURFACING
KINGS RIVER CONSERVATION DISTRICT
FRESNO COUNTY, CA
STORMWATER MANAGEMENT
STORMWATER MANAGEMENT

PROVOST & PRITCHARD
CONSULTING GROUP
AN EMPLOYEE OWNED CORPORATION
411 E. BRIDGEWAY
FRESNO, CALIFORNIA 93711-6162
558/449-2700 FAX 558/449-2715
www.pwpg.com

DESIGN ENGINEER:
JASON STAICER
LICENSE NO:
86615

DRAFTED BY: JMN	CHECKED BY: JSD
DATE: DEC 2020	
JOB NO: 136420002	
PROJECT NO: 136420002	
PHASE:	
0 15 30 60	
ORIGINAL SCALE SHOWN IS ONE INCH. ADJUST SCALE FOR REDUCED OR ENLARGED PLANS.	
SHEET SW-2	
7 OF 7	